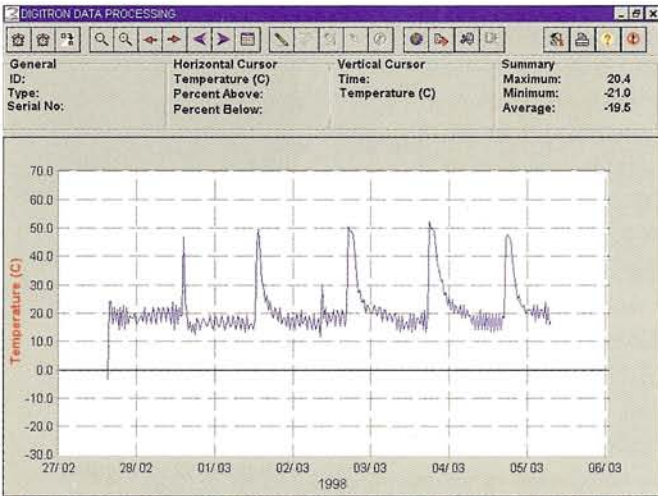


DigiLink & DigiLog

Simple data collection and analysis

Some models in the 2000 Series feature special logging functions that enable readings to be taken, stored, retrieved and downloaded in the shortest possible time. This reduces the risk of clerical errors and saves writing and keying-in time when analysis is needed.



Logging on Demand

Logging On Demand allows readings to be stored when required (up to 50), with the ability to add a four digit reference number (including decimal point) to each reading, and record the date and time each reading is taken. This function is excellent for helping you cut down on paperwork and clerical errors. It is ideally suited to tasks where you wish to maintain a record of the time and date when a temperature was taken.

With Preset Interval Logging, you really can "set it, forget it", as the instrument will continue logging until a maximum of 250 readings are taken or your data is downloaded.

Data Analysis

Data can be viewed and analysed direct from the magnified display. By simply pressing a few keys you can scroll through your readings with ease.

Preset Interval Logging

Preset Interval Logging lets you determine the frequency at which readings are taken. Once the instrument has been set, readings are taken automatically at the interval you decide (from once every minute, to once every 24

hours), providing an excellent means of troubleshooting and examining trends over a given period of time.



DigiLink



Data download with DigiLink

Access to stored information is gained via Digitron's infrared DigiLink, which is designed to give users of the 2000 Series a quick and simple means of retrieving and downloading data,

Information can be output direct to either an Epson compatible printer for immediate study, or downloaded to a PC for more detailed analysis.

Data analysis with DigiLog for Windows™

Digitron have created a Windows™ software package, DigiLog, (suitable for all Digitron logging instruments) enabling information to be put into spreadsheets and charts for incorporating into reports and other documents. Even separate reports from different units can be merged to produce one report.

PC analysis really couldn't be any simpler. By following the software's simple menu instructions, you will find it easy to view and manipulate

information to your individual requirements. For example, once a logging session is complete, all you need do in order to gain access to information stored within the instrument is position the PC's cursor over the "Download logger" button, then click once and then click on the "Download" button. Information is then automatically transferred, via the infrared link and stored within the computer.

You may display the retrieved information in graph format by positioning the cursor over

the "Graph data" button and click again. You can access the graph produced to highlight certain areas or key data points, prior to printing or exporting the graph into other software packages.

Furthermore, all graphs show the identification number of the instrument used, enabling data to be cross-checked against calibration records helping to ensure full traceability.



Accessories

Why not order one of our high impact rubber boots, with or without sling, to protect and further enhance the durability of your instrument. Available in dark grey and fluorescent green.

Our temperature, pressure and RH instruments are also available in a variety of kits. These are supplied in a neat protective carry case and are available in several combinations made up of instruments with probes or DigiLink interface.



For checking the calibration of your entire temperature system, (instruments and probes), order the TBS1 system calibration checker, this could save you money on potential future calibration costs.



Test Caps are also available for checking the calibration of your 2046T only, these come in -18°C, 0°C, 5°C and 65°C.

Call our Digitron Sales Office to ask for further details on any of the accessories mentioned above.